

Improving Working Conditions for Train Crews

Repair and equipping of sanitary and recreation quarters for the attendant pool

The Company pays much attention to creating comfortable working conditions for employees. In 2024, we continued bringing the infrastructure for JSC FPC's employees to up-to-date standards:

- In March 2024, updated rest rooms and a gym were opened for employees of the Severobaykalsk carriage station of the East Siberian Branch (the building was renovated at a total cost of more than RUB 28 million: three rest rooms with to accommodate up to 18 people were equipped, and rooms for on-duty staff, rooms for taking meals, washrooms, showers, a storage room, dressing rooms, fitting rooms, an ironing room and a make-up room were arranged). The works were carried out as a part of preparation for the 50th anniversary of the Baikal-Amur Mainline.
- A canteen at the Nikolayevka passenger carriage depot that is used by all employees, including train crews of turnaround trains, was updated.

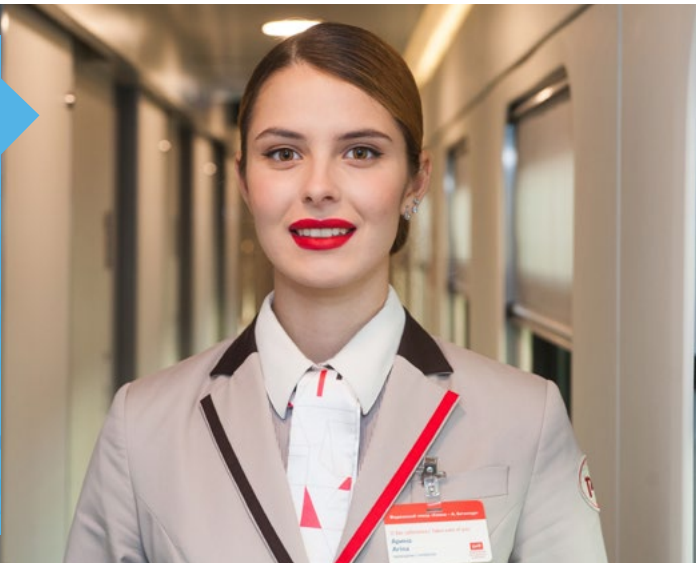
- In May, the renovated attendant pool building at the Penza railway carriage station was commissioned through an appropriate ceremony.
- in June 2024, a higher-speed train attendant pool building was put into operation after the upgrade of the sanitary and recreation building of the Moscow-Yaroslavskaia CS.

A total of 28 buildings and structures are scheduled for reconstruction and repair by the end of 2024 under the capital repair programme to improve working and recreational conditions for employees.

In early 2025, it is planned to open renovated recreation rooms for attendant pool in Tynda and Khabarovsk.

New uniforms

Starting from 2022, the Company will switch to new uniforms. At present, employees of train crews in all structural subdivisions have fully switched to the new uniforms. The number of employees wearing new uniforms is over 93%.



Key Operational Highlights

In 2024, JSC FPC's passenger turnover will reach 95.8 billion passenger-km, which will constitute an increase of 4.8% vs. 2023 and 18.0% vs. 2022. In the Company's own trains, the volume of traffic increased to 94.2 billion passenger-km (104.7% vs. 2023 and 117.8% vs. 2022), including 52.1 billion passenger-km in the regulated segment (102.6% vs. 2023 and 110.6% vs. 2022) and 42.1 billion passenger-km in the deregulated segment (107.4% vs. 2023 and 128.1% vs. 2022).

The following factors influenced the growth of passenger traffic volumes:

- Extension of close-down of southern airports
- Switching of passenger traffic from air to railway transport in a number of destinations
- Growth of transport mobility of the population as a result of the strengthening of the economy of the Russian Federation
- Development of relations with the CIS and Baltic countries

The number of passengers carried totalled 112.7 million, including 62.2 million in the regulated segment and 50.5 million in the deregulated segment. The number of passengers carried rose to 104.3% vs. 2023, and to 117.5% vs. 2022.

Passenger turnover on trains operated by the CIS and Baltic countries totalled 1.6 billion passenger-km (111.9% vs. 2023 and 129.8% vs. 2022).

The growth in the volume of international traffic was driven by the increased number of regular passenger interstate trains with the Republic of Belarus. The volume of train services with Mongolia, the Republic of Kazakhstan, the Republic of Uzbekistan, the Kyrgyz Republic and the Republic of Tajikistan was maintained at the level of 2023. In addition, year-round railway service with the PRC and the DPRK was resumed from 15 December 2024.

Volume-based indicators

Indicator	2022	2023	2024	Δ 2024/2023, %
Billion passenger-km travelled	81.2	91.4	95.8	104.8
On trains made up by JSC FPC	79.9	89.9	94.2	104.7
• Deregulated segment	32.9	39.2	42.1	107.4
• Domestic service	31.2	37.5	40.3	107.4
• international service	1.6	1.7	1.8	108.9
• Regulated segment	47.1	50.8	52.1	102.6
On trains made up in the CIS and Baltic States	1.2	1.4	1.6	111.9
Passengers carried, million people	95.9	108.1	112.7	104.3
• Deregulated segment	40.5	47.3	50.5	106.7
• Regulated segment	55.5	60.7	62.2	102.5

As the passenger-km travelled in trains made up by JSC FPC grew by 4.7% year-on-year, it drove up the carriage-km travelled to 2,897.7 million carriage-km,

or by 4.4% year-on-year. Thus, the space utilisation rate was 74.0%, which is 0.2 p.p. above the 2023 level and 2.1 p.p. above the 2022 level.